

Joint Research Management Office Research News Bulletin

Issue 135

15 November 2024

The Research News Bulletin is edited by Nick Good ~ nicholas.good@nhs.net

Join the NIHR Reviewer Development Scheme

The NIHR has launched a new Reviewer Development Scheme.

If you are an early career researcher or professional who is new to reviewing funding applications and you want to develop your skills further this is an ideal opportunity.

As a member you can gain experience of peer reviewing for NIHR funding programmes, and in turn influence research commissioning. Additionally reviewing counts as evidence of continuing professional development (CPD) and the NIHR will provide written confirmation of completed tasks for inclusion in your CPD portfolio. For consultant grade medical reviewers, peer review for NIHR is also recognised in Clinical Excellence Award submissions.

Scheme members receive guidance and constructive feedback on their reviews to help hone their reviewing skills. They can view anonymised comments from other experienced reviewers, given the same review task, to see how their reviews compare.

Each year, all post-doctoral Scheme members can apply for a limited number of NIHR Committee Member Development Scheme (CMDS) participant roles. Those roles are one-year mentored positions that give members first-hand experience of sitting on an NIHR committee. The roles

provide insight into the assessment of proposed research and how to write good research applications and produce well-designed studies and enhance the skills and confidence of members to empower them to apply for their own grants and other committee roles.

This Scheme is aimed at career researchers and professionals in health and social care with little or no experience of reviewing. If you are an experienced reviewer or Lead Applicant, please register to join our expert reviewer community as a [peer reviewer](#) instead. This applies to you if you have a strong publication track record and have held grants of over £100,000 (excluding fellowships).

For further information please [see the NIHR website](#), and [to register follow this link](#).



Bulletin contents

<u>News</u>	1
Join the NIHR Reviewer Development Scheme	1
Barts Charity Impact Report 2023-2024	3
New HRA & MHRA Inclusion & Diversity Guidance	3
Nagoya Protocol page now on JRMO website	3
Update to process for reimbursing volunteer expenses and payments	4
Comments requested on draft HRA Chief Investigator Commercial Agreement	4
UKRI launches policy on use of generative AI in applications and assessments	4
Two million plus take part in health research in London	5
<u>Our research</u>	5
More research-active AHPs at Barts Health	5
Cancer-killing virus treatment shows promise in brain tumour trial	6
Vast majority of women appear to prefer self-sampling to traditional cervical screening	7
Pioneering stroke care with first in Europe balloon catheter	8
<u>Events</u>	9
Barts Health Data Platform MVP Launch	9
NIHR Associate PI Scheme: Launching your Research Career	9
JRMO drop-in sessions	10
Lunchtime Research Talks at the Royal London Hospital	10
<u>Training</u>	10
JRMO GCP Training	10
Human Tissue Act (HTA) training	11
Queen Mary CPE advice surgeries	11
NIHR UCLH BRC PPIE training	11
NIHR Learning for Involvement	11
SBK Healthcare Events & Training	12
HARP developmental training	12
<u>Research funding</u>	13
NIHR grant calls	13
UKRI grant calls	14
Barts Charity grants	17
JRMO International Team funding bulletin	18
<u>Fellowships and related opportunities</u>	18
<u>Research Professional</u>	20

~ Please remember to upload your recruitment data regularly ~

It is the responsibility of research teams to ensure the EDGE record for each project is accurate. If you need training in the use of EDGE please contact

Zabed.ahmed@qmul.ac.uk in the JRMO.



Barts Charity Impact Report 2023-2024

Barts Charity's latest [impact report](#) highlights the inspiring people and projects that are making a difference to people in East London through groundbreaking scientific research findings and transformative healthcare.

Highlights include findings that show a commonly prescribed drug for preventing heart attacks may be ineffective for people from South Asian backgrounds, compared to people of European ancestry, led by Dr Emma Magavern.

Also covered is research that has influenced national guidelines on nitrous oxide (laughing gas), endorsed by the Association of British Neurologists, from the Centre for Preventive Neurology, and research showing that 'long colds' exist as well as 'long Covid', highlighting the need for more research into the long-lasting impact of respiratory infections, led by Professor Adrian Martineau at the Blizard Institute. Adrian has recently received new funding from Barts Charity to expand this research to compare the impact of different respiratory viruses including Covid on asthma attacks.

For information about Barts Charity funding please visit the [Barts Charity website](#).

New HRA & MHRA Inclusion & Diversity Guidance

The HRA has launched an informal consultation on draft inclusion and diversity guidance we're producing alongside the Medicines and Healthcare products Regulatory Agency. Link to survey - [HRA and MHRA draft inclusion and diversity guidance - Health Research Authority](#)

The guidance will help ensure research is designed to include people who could be impacted by the findings, and that people underserved by research are not overlooked.

The [informal consultation is to get feedback](#) from the public and the research community

on the clarity of the guidance and whether we have included the information needed to support researchers and sponsors in developing an inclusion and diversity plan. **It will be open until 9 December.**



The HRA will be undertaking a pilot in early 2025 in which sponsors and researchers will be invited to submit a Plan as part of their IRAS application.

Plans will be reviewed by a small number of RECs as part of the overall application, and we will be asking RECs, sponsors and researchers to provide feedback on their experience.

If you would be interested in taking part in the pilot, please get in touch engagement.team@hra.nhs.uk

Nagoya Protocol page now on JRMO website

As a global university, Queen Mary benefits from international research collaborations, which bring significant economic and social benefits and intellectual talent to our local community and the UK.

Researchers undertaking international research collaborations need to consider the potential implications and risks of sharing information and actively take steps to mitigate these risks. The National Protective Security Authority (NPSA) has recommended three key areas to consider assessing partner suitability, managing information and knowledge sharing, and protection of intellectual assets.

A [new JRMO webpage](#) has been created to bring together NPSA and UKRI guidance on trusted research for academia. It can be found on the NPSA's website, plus the steps to be taken along with training available.

For further information please see the Trusted Research and Compliance webpage or contact the team who can help assess partnership risks within the global context, provide advice on individual cases in compliance with Export Controls legislations and the NSI Act, develop training and provide guidance in trusted research to researchers. The team's email account: vp-trustedresearch@qmul.ac.uk

Update to process for reimbursing volunteer expenses and payments

Queen Mary's processes for reimbursing expenses and payments for volunteers, lay/PPIE contributors and other participants in clinical trials and research have changed. The changes amount to a change to the email address for submissions, some additional instructions have been introduced for researchers to include 'PPIE claim' in the subject line of emails when sending forms to be processed, and a revised BACS form.

Full up-to-date information and forms can be found [on the JRMO website](#).



Comments requested on draft HRA Chief Investigator Commercial Agreement

The Health Research Authority (HRA) is looking for feedback on a new draft of a model Commercial Chief Investigator Agreement (mCCIA).

Feedback is welcome from commercial sponsors, contract research organisations, chief investigators (CIs), and their employing organisations.

[The new draft agreement](#) has been developed by Contracts Leads from England, Scotland, Wales and Northern Ireland, as a result of feedback from pharmaceutical companies. The

HRA is now requesting further comments from the wider community about its suitability for use with clinical trials of investigational medicinal products (CTIMPs).

All research leads should have received an email asking for their comments but, even if not, please provide your comments by email, including comments and tracked changes within the draft template as needed, to research.agreements@hra.nhs.uk on or before 30 November 2024.

UKRI launches policy on use of generative AI in applications and assessments

UK Research and Innovation(UKRI) has launched its policy on the [use of generative AI in application preparation and assessment](#).



Generative AI is a broad label used to describe any AI that can be used to create new content such as text, images, video, audio or code.

It is a fast-emerging and evolving technology that can present opportunities and bring benefits in the context of research and innovation by facilitating creativity and the development of ideas, providing a useful tool for people who have neurodivergences, and reducing language barriers.

Generative AI also presents potential risks for research and innovation which can compromise the integrity of the application and assessment process.

Integrity is critical to upholding the values of honesty, rigour, transparency and open communication within our research and innovation system. However, intense delivery

pressures and competition for finite resources can create perverse incentives.

The new policy sets out UKRI's position on the use of generative AI during the funding application and assessment process. It builds upon the joint funder statement that UKRI became a signatory to in September 2023, on the [use of generative AI tools in funding applications and assessment](#).

It aligns with the values shared between UKRI and other UK research funders who are signatories to the statement and establishes the responsibilities of everyone involved in the application and assessment process, including applicants, assessors, and the UKRI as a funder.

For further details please see the policy on the [use of generative AI in application and assessment](#).

For enquiries about the policy, please email our funding policy team at fundingpolicy@ukri.org.

Two million plus take part in health research in London

New figures released by the National Institute for Health and Care Research (NIHR) show that more than two million participants across London and parts of Essex, Bedfordshire, and Hertfordshire have taken part in research to help improve the nation's health and wealth over the last ten years.

Since 2014, when the NIHR Clinical Research Network (CRN) was founded, 2,096,103 people have taken part in research in the capital and parts of the neighbouring counties. Nearly 9 million people (8,896,938) have taken part nationally. In 2023/24, nearly a quarter of a million participants in the capital (226,736)

took part in CRN-supported research. They got involved in research on a number of conditions, including depression, cancer, and dementia.

Over the last year, 1,045,282 people across England took part in health and care research. This is the fourth year in a row that around a million people have been involved in research supported by the NIHR CRN.



The data says that a quarter of the people who participated in research in England in 2023-24 were recruited via primary care, including GP practices.

It's a decade since the formation of the NIHR Clinical Research Network, which supports the delivery of research in the NHS and other settings across England. The Department of Health and Social Care-funded organisation was founded in 2006, with the Clinical Research Network founded in April 2014.

For more information on taking part in research, visit the NIHR's [Be Part of Research website](#).

Our research

More research-active AHPs at Barts Health

There has been an exciting and remarkable growth in the number of research-active Allied Health Professionals (AHPs) at Barts Health NHS Trust over the past few years. This progress reflects our commitment to creating an environment where research and

innovation thrive, leading to better patient care and enhanced career opportunities for our staff. Research activity plays a critical role in enhancing patient care.

Increasing involvement of AHPs in research not only contributes to the development of our professionals but also ensures patients receive the highest quality care. The appointment of Dr Hortensia Gimeno as Associate Director for

Therapies Research in 2021 was a significant milestone; providing support for AHPs wanting to develop research skills and apply for clinical academic fellowships. Collectively this group have generated £6,456,274 of grant funding in the last 30 months. Funding sources include National Institute of Health and Care Research (NIHR) and HARP (Health Advances in Underrepresented Research).

The following AHPs are now leading the research activities indicated:



Prof Katie Sheehan, Academic Physiotherapist Future Leaders Fellowship UKRI, 2023. Stratified approach to acute rehabilitation following hip fracture.



Dr Hortensia Gimeno, Clinical Academic Occupational Therapist Advanced Fellowship NIHR, 2024. Addressing critical gaps in childhood-onset hyperkinetic movement disorders: Towards evidence-based interventions and personalised rehabilitation



Lisa Newington, Clinical Academic Physiotherapist NIHR Development and Skills Enhancement Award, 2024: Health Data science.



Dr Freya Sparks, Speech and Language Therapist Doctoral Fellowship Barts Charity, 2021. Preapplication support fund, NIHR, 2024. Approaches to tracheoesophageal voice rehabilitation in head a neck cancer.



Jessica Pawson, Musculoskeletal Research Physiotherapist Predoctoral Fellowship NIHR, 2023. Doctoral Fellowship HARP, 2024. Enhancing Equity in

Musculoskeletal Physiotherapy: a co-designed culturally tailored intervention.



Eileen Kelly, Critical Care Speech and Language Therapist Predoctoral fellowship NIHR, 2023. Doctoral Fellowship 2024 with Barts Charity. Exploring the application of ultrasound for the evaluation of swallowing and voice for patients in critical care.



Catherine Hilton, Orthopaedic Research Physiotherapist Pre-doctoral fellowship, NIHR, 2021. Doctoral Fellowship 2024, Barts Charity. Developing a rehabilitation intervention for adults following lower limb complex fracture.



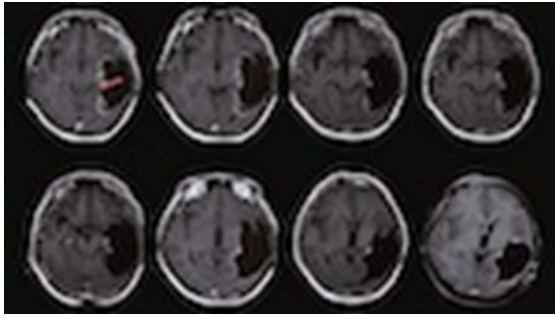
Saira Nazeer, Critical Care Physiotherapist Predoctoral Clinical Academic. Fellowship 2024, HARP. Exploring access of critical care follow up in underserved groups.

Cancer-killing virus treatment shows promise in brain tumour trial

An innovative cancer-killing virus shows promise for tackling glioblastoma, an aggressive type of brain tumour, according to new results from a phase I clinical trial published in [Nature Communications](#).

Researchers from Queen Mary, the Chinese Academy of Sciences and Capital Medical University in Beijing tested a virus treatment in eight patients with glioblastoma. The treatment was safe and effective below a maximum dose, with complete remission achieved in one patient, supporting progression to phase II clinical trials.

Glioblastoma is the most common and fatal type of brain cancer, with most patients surviving fewer than 14 months after diagnosis. Existing treatments have limited success, and tumour recurrence is common.



Oncolytic viruses – viruses that selectively target and kill cancer cells while leaving healthy cells unharmed – have gained attention as promising treatments and have been tested widely in glioblastoma. However, delivering these treatments is challenging.

In this phase I, dose-escalation study the team enrolled eight patients with glioblastoma that had returned after surgery. Patients received one of three dosages of the new virus, named Ad-TD-nsIL12. The team identified a maximum-tolerated dose, below which the treatment was safe and well-tolerated, with only mild to moderate side effects. Encouragingly, one patient achieved a complete response, meaning that the tumour disappeared entirely, and another experienced a partial response, with tumour shrinkage.

The success of the Ad-TD-nsIL12 virus lies in its unique design. The team genetically engineered an adenovirus (a type of virus typically associated with common colds) to deliver a modified version of IL-12 – one of the most potent immune-boosting proteins. IL-12 has shown enormous potential in inhibiting tumour growth but can be extremely toxic in its natural form. To overcome this, the version engineered restricts its release from cells, limiting it to the area surrounding the tumour and preventing it from building up to high levels throughout the body.

Professor Yaohe Wang, co-lead author of the study and inventor of the virus said "It's like Yin and Yang. This virus enhances the positive signals that encourage the immune system to attack the tumour, but it could also be paired with treatments that block the tumour's ability to suppress the immune system."

This could be a promising candidate for combination therapies, potentially working alongside other treatments like immunotherapy.

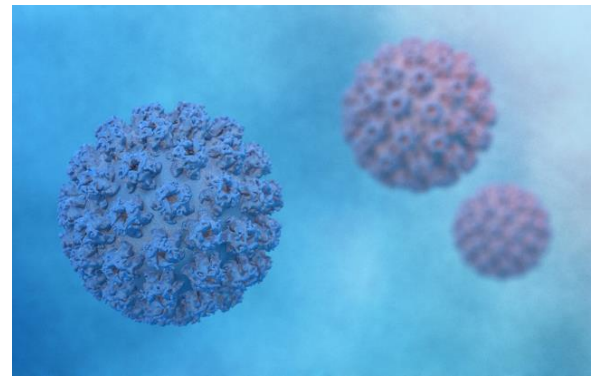
The work, which brings together experts from Beijing and London, highlights the importance

of international collaboration in advancing cancer research. Professor Wang emphasised: "This collaboration was key to the success of the project, and we look forward to continuing our work together as we develop this promising therapy further."

For more info see the [Queen Mary news site](#).

Vast majority of women appear to prefer self-sampling to traditional cervical screening

Our recent research has highlighted a growing demand for more flexibility and accessible cervical cancer testing options.



A new study led by researchers at Queen Mary reveals women would welcome the option to choose between self-sampling and traditional screening done by a nurse or doctor for human papillomavirus (HPV)-based cervical screening.

The study, published in the *Journal of Medical Screening*, assessed a group of 2,300 women aged 24-65 who had collected their own samples alongside having their standard cervical screening in 38 GP practices across England. Participants were asked about their screening preference and their attitudes toward being offered a choice between the two methods. Researchers explored age, education, ethnicity, and screening experience as predictors of attitudes towards a choice and anticipated future choice.

Of the women surveyed, 85% preferred being given the choice, with 72% stating this choice would enhance their screening experience, and 69% said they would choose to self-sample at home if offered a choice in the future. However, a proportion of women expressed concern about making the choice between screening methods: 23% felt it would

be difficult to choose, 15% would worry about making a choice, and 48% would prefer a recommendation. These concerns were reported more frequently by women with fewer qualifications, compared to women with degree-level education.

Researchers believe these findings highlight an urgent need to explore and evaluate different methods of offering this choice, ensuring that effective messaging is used during any implementation or assessment of HPV self-sampling options in the UK and beyond.

Senior author, Jo Waller, Prof of Cancer Behavioural Science, Centre for Cancer Screening, Prevention and Early Diagnosis at Queen Mary's Wolfson Institute for Population Health said: "This study confirms that choice would generally be welcomed when it comes to cervical screening. For many, self-sampling would be a more convenient and acceptable option, but others prefer the reassurance of knowing a nurse or doctor has done the test".

Cervical cancer is one of the most preventable types of cancer. However, data show that uptake of in-person screening offered through the NHS Cervical Screening Programme is at an all-time low in England. In 2023, data from NHS England showed that about one in three eligible women, aged between 25–64 are not up to date on their cervical cancer screening. This study comes as more flexible screening methods such as self-testing are being explored to increase participation and make the screening service more accessible for women.

This study was funded by the Department of Health and Social Care (DHSC). More information is [on the Queen Mary website](#).

Pioneering stroke care with first in Europe balloon catheter

The Royal London Hospital has become the first in Europe to use an innovative balloon guide catheter (BGC) called EMBOGUARD in clinical practice.

Mechanical thrombectomy is a life-saving procedure that removes blood clots from the brain during a stroke, restoring blood flow and preventing significant brain damage. Initial studies suggest the advanced balloon guide catheter tool achieves faster and more effective clot removal compared to the standard base catheters usually used.



"Timely and effective treatment of stroke patients is critical to reducing lifelong disability or dependency," said Dr Levansri Makalanda, Lead Consultant for Interventional Neuroradiology at Barts Health NHS Trust.

"We are big believers in using the most modern and evidence-based technology for patient specific care. For us here at Barts Health, and others within the speciality, the benefits of balloon guide catheters are recognised for their ability to maximise patient outcomes. The EMBOGUARD is a game changer – with its large bore and flexible design allowing better access to intracranial circulation. This significantly improves the chances for patients to live a functional and fulfilling life post-stroke."

The Royal London Hospital's Stroke Mechanical Thrombectomy Network is the largest 24/7 service of its kind in the UK, serving more than eight million people across South and East England. Despite the challenges posed by the pandemic, the service expanded without additional infrastructure investment, reducing health inequalities across the region.

Since its expansion in 2020, the service has experienced a 300% increase in patient numbers, performing 256 thrombectomy procedures in 2021 alone. Over 22,000 suspected stroke cases have been processed, with a remarkable increase in thrombectomy success across the region.

"We're committed to using the latest technology to maximise outcomes for our patients," added Dr. Makalanda. "The introduction of EMBOGUARD is a major step forward in stroke care, allowing us to deliver even better results for those we treat." More information about the Barts Health stroke team can be found on [Barts Health WeShare](#):

Events

Barts Health Data Platform MVP Launch

The Barts Health Data Platform launches with an MVP Launch event on Monday, 2 December.

Following a successful soft launch in October, this event promises to be a transformative experience for researchers and clinicians alike.

You are welcome to join the team for an engaging workshop where you will discover key updates about the platform, including the latest features and enhancements. You will learn how to navigate our streamlined data access processes, making it easier than ever to tap into valuable health data held within the hospital.

Additionally, hear firsthand experiences from beta users about what worked well and what's on the horizon. The team will also share their roadmap for the upcoming months and provide ample opportunity for you to engage in a Q&A session with our expert team.

This workshop is designed for researchers and clinicians from the Barts Life Science partnership and their collaborators who are eager to leverage the platform for their upcoming projects. Whether you're ready to dive in or simply curious about what we offer, this event is tailored for you.

After the workshop, we invite you to unwind at our networking drinks reception. This is a fantastic opportunity to connect with fellow attendees, exchange ideas, and explore potential collaborations in a relaxed atmosphere.

Monday, 2 December, 3-6 pm
Clark-Kennedy Lecture Theatre, Queen Mary Innovation Building, 5 Walden Street, E1 2EF

[Please visit the TickSource website](#) to register and secure your place. The team looks forward to seeing you there!

If you have any questions about this please contact Francene Clarke-Walden, Precision Medicine Engagement & Communications Manager, at francene.clarke-walden@nhs.net



NIHR Associate PI Scheme: Launching your Research Career

An online event will take place to launch the NIHR's Associate PI Scheme: 'Launching your Research Career' on Tuesday 19 November 2024, from 9.30 am to midday.

The NIHR Associate PI Scheme: Launching your Research Career event is aimed at all Nurses, Midwives and AHPs interested in learning more about the Associate PI Scheme. The scheme is a six-month in-work training opportunity, providing practical experience for health and care professionals starting their research careers. Further information is available on [the NIHR website](#).

The event will cover an overview of the Associate PI Scheme - How to register and what's involved and be an opportunity to hear about the Scheme from a variety of perspectives, learn about further NIHR learning opportunities, including the Principal Investigator Pipeline Programme (PIPP) for Research Nurses and Research Midwives.

Rachel Mandel, a certified Associate PI physiotherapist from the North Thames region is a confirmed speaker. There will also be a talk on the PIPP scheme for research nurses and research midwives.

If you would like to attend or have any questions please save the date and add your details to this [Expression of Interest Form](#) and the team will contact you as soon as more details are available.

Whilst the event and agenda are primarily aimed at Nurses, Midwives, and AHPs, Health and Care professionals from outside these professions are still welcome to participate. If

you have any questions, please email the Associate PI Scheme Team at associatepische@nhr.ac.uk

JRMO drop-in sessions

JRMO drop-in sessions take place on the second Wednesday of every month, between 10 and 11 am.

To attend please log on [via MS Teams](#) at that time.

You may have questions about could include study set-up, research governance and sponsorship, research ethics, Good Clinical Practice (GCP) advice, research passports and staff access, research finance and funding, costing and contracts, as well as patient and public involvement. Whatever it is, come along and the team will be available on a first-come-first-served basis:



You can of course contact the team at any time - research.governance@qmul.ac.uk - if you have a query regarding research

governance, amendments or other GCP-related matters.

Lunchtime Research Talks at the Royal London Hospital

Monthly research talks have been running at the Royal London for almost a year now. These events started small and are now running as hybrid meetings, live and via MS Teams.

The talks aim to foster and sustain Barts Health's clinical research environment. They are delivered by guest speakers or members of clinical research teams on a wide range of topics. They provide an open forum in an informal setting to share best practices and engage with topics relating to embedding research, clinical research delivery and workforce development.

They usually last an hour, including a presentation followed by a discussion. Everyone is welcome, topics will likely be of particular interest to the research delivery workforce and clinical staff looking to learn about research. Sessions are hybrid, no need to register for online attendance.

Room size is limited so please contact the team if you are planning to attend in person.

For more details on talks and to book a place please contact Imogen Skene at i.skene@nhs.net

Training

JRMO GCP Training

Both Queen Mary and Barts Health require all those undertaking clinical research at our sites to attend appropriate training. It is mandated that all researchers conducting MHRA-regulated trials must complete a GCP course and refresh it every two years. The same is advised as the best practice for all other researchers.

More details regarding research-specific training can be found in [JRMO SOP 34a Researcher Training](#) and [SOP 12b Associated](#)

[Document 2: JRMO Sponsorship review proportionality document.](#)

Dates for training this academic year can now be found [on the JRMO website](#). Most courses are now delivered by Zoom.

To book a course please email research.governance@qmul.ac.uk with the subject title 'GCP COURSE BOOKING', including in the body of the email the name of the JRMO course you wish to attend. Your place will be confirmed by email.

Human Tissue Act (HTA) training

All research staff and students who need to be trained to take consent for research studies, and to understand the rules governing the use of human tissue, set out in the Human Tissue Act, before working with human tissue and/ or data, need to undertake this training every three years. After three years you will need to undertake a refresher course.

- **HTA and the implications for research - Introduction course**

The course provides an overview of the human tissue legislation in the UK and the role and importance of the Human Tissue Authority (HTA). 2025 dates are:

28 January 2025 2-3 pm via Teams
25 March 2025 2-3 pm via Teams
20 May 2025 2-3 pm via Teams
23 September 2025 2-3 pm via Teams
18 November 2025 2-3 pm via Teams

- **HTA and the implications for research - Refresher course**

This course is a short follow-on course from the introduction course to top up knowledge of the Human Tissue Act and Human Tissue Authority every 3 years. 2025 dates are:

13 February 2025 2-3 pm via Teams
15 April 2025 2-3 pm via Teams
24 June 2025 2-3 pm via Teams
9 October 2025 2-3 pm via Teams
4 December 2025 2-3 pm via Teams

Bookings can be made by contacting Katie Ersapah (k.ersapah@nhs.net)

Queen Mary CPE advice surgeries

The [Centre for Public Engagement \(CPE\)](#) runs regular Advice Surgeries, where you can pick the team's brains about all things public engagement. The team are available to discuss potential ideas, assist with project development, look at logistics, signpost you to funding, and more, both within Queen Mary and the wider public engagement landscape.

Forthcoming dates:

- Thursday 7 November 11 am-1 pm
- Thursday 21 November 11 am-1 pm

You can book a slot at an advice surgery [online](#) and if you have any questions regarding the sessions, please email publicengagement@qmul.ac.uk

NIHR UCLH BRC PPIE training

NIHR UCL Hospital's Biomedical Research Centre runs a number of ongoing online PPIE-related courses all of which can be [viewed on the UCLH BRC website](#).

These courses are open to all staff working for UCLPartners member organisations (which includes Queen Mary and Barts Health). You can register to any of these courses by emailing ppihelpdesk@ucl.ac.uk with the following information:

- Name of workshop
- Date of workshop
- Your name
- Job title and organisation
- Your departmental budget code

Upcoming courses include:

- **How to find patient partners and keep them involved** - This session is for anyone looking to involve patients in their research. Learn where to go to find people who will get involved, and how to help them remain engaged. Thursday 14 November 2024, 2 to 4.30pm
- **Facilitation: how to get the most out of your PPI activities** - This session is for anyone looking to run workshops of focus groups. Learn how to get the most out of your meetings. Thursday 21 November 2024, 10 am to 12.30 pm.
- **How to do PPI: focus groups and more** - This session is for anyone who understands the role of PPI and wants to put their learning into practice. The session examines PPI methods in depth, including cost, how to choose the right method for your project, and with a particular look at how to run a PPI focus group. Thursday 28 November 2024, 2 to 4.30pm.

NIHR Learning for Involvement

- **Centre for BME Health BAME Toolkit:** The Centre for BME Health has produced a checklist to help researchers when designing and recruiting for studies, as

well as when conducting PPIE activities. The toolkit aims to capture best practices and provide researchers with a framework on how to improve the participation of people from ethnic minorities in research. Available on their [website](#).

- **Improving Inclusivity within Research:** BAME groups are more likely to suffer from poorer health outcomes and health and social care inequalities and are less likely to be represented in health and social care research studies. This [training module and toolkit](#) from CRN East Midlands and the Centre for BME Health will help your research become more inclusive of ethnic minority groups.
- **Patient and Public Involvement Toolkit:** Involving People's Public and Patient Involvement [Toolkit](#) is a very useful resource which will take you through each stage of the engagement process. This will help you understand what you are trying to achieve, plan how you will achieve it, produce a report based on your findings, and inform how your services can meet the needs of local people better.

SBK leading events in healthcare **SBK Healthcare Events & Training**

[SBK Healthcare](#) provides training for clinical research that covers topics from quality assurance, skills development, preparing for inspections, and information governance, to support research in specific clinical areas.

In addition, they run several interactive forums and free webinars and have various video training resources. More information about all that can be found on their website: <https://www.sbk-healthcare.co.uk/>

If you are interested in attending any of the courses you can contact Nichola Cadwallader - nichola.cadwallader@sbk-healthcare.co.uk - quote 'JRMO' in the subject line of your email and she may be able to offer a reduced rate.



HARP developmental training

- **Developing your career in clinical research:** Attend our research careers engagement session, in collaboration with HARP, to hear from current Barts Health staff who are developing clinical academic careers and speak directly to the HARP programme lead, to learn more about opportunities available.
- **Health Advances in Underrepresented Populations and Diseases (HARP)** is an exciting new PhD Programme for all health professionals based in London's vibrant East End. The programme is open to any health professional, regardless of personal background, who is enthusiastic and can show their ability to conduct world-class research that tackles health inequality.

For more information and to book a place in person, Barts Health staff and students should follow this [link to book Barts Health training](#).

If you wish to attend online, please do not book as above but instead email Imogen Skene i.skene@nhs.net, for an MS Teams link to join.



Research funding

NIHR grant calls

NIHR | National Institute
for Health Research

- [24/80 NIHR NICE Rolling Call \(HSDR Programme\)](#)
The Health and Social Care Delivery Research (HSDR) Programme is accepting Stage 1 applications for this funding opportunity.
Closes: 13:00 on 21 November 2024
- [24/81 HSDR Researcher-led call](#)
The Health and Social Care Delivery Research (HSDR) Programme is accepting Stage 1 applications for this funding opportunity.
Closes: 13:00 on 21 November 2024
- [24/73 Intravascular lithotripsy in peripheral arterial disease](#)
The Health Technology Assessment (HTA) Programme is accepting Stage 1 applications to their commissioned workstream for this primary research topic.
Closes: 13:00 on 27 November 2024
- [24/68 Management of blood pressure in elderly people with hypertension and symptomatic postural hypotension](#)
The Health Technology Assessment (HTA) Programme is accepting Stage 1 applications to their commissioned workstream for this primary research topic.
Closes: 1 pm on 27 November 2024
- [24/69 Improving diagnosis of Urinary Tract Infection in older adults](#)
The Health Technology Assessment (HTA) Programme is accepting Stage 1 applications to their commissioned workstream for this primary research topic.
Closes: 1 pm on 27 November 2024
- [24/88 Ambitious data-enabled "e-trials"](#)
The Health Technology Assessment (HTA) Programme is accepting Stage 1 applications to their commissioned workstream for this primary research topic.
Closes: 13:00 on 27 November 2024
- [24/87 CBT adapted for autistic adults with a mental health problem](#)
The Health Technology Assessment (HTA) Programme is accepting Stage 1 applications to their commissioned workstream for this primary research topic.
Closes: 1 pm on 27 November 2024
- [24/78 Ultra-processed foods](#)
The Public Health Research (PHR) Programme is accepting Stage 1 applications to their commissioned workstream for this topic.
Closes: 13:00 on 13 December 2024
- [24/62 Active Travel facilitators and barriers within different populations](#)
The Public Health Research (PHR) Programme is accepting Stage 1 applications to their commissioned workstream for this topic.
Closes: 13:00 on 13 December 2024
- [Behavioural overweight and obesity management interventions that include long term support in achieving and maintaining weight loss in children and young people](#)
The Public Health Research (PHR) Programme is accepting Stage 1 applications to their commissioned workstream for this topic.
Closing date: 13 December 2024 at 1:00 pm
- [NIHR James Lind Alliance Priority Setting Partnerships rolling call \(PHR Programme\)](#)
The Public Health Research (PHR) Programme are accepting Stage 1 applications to their researcher-led workstream.
Closing date: 13 December 2024 at 1:00 pm
- [Continuing areas of research interest to the PHR Programme](#)
The Public Health Research (PHR) Programme is accepting Stage 1 applications to their commissioned workstream for these topics.
Closing date: 13 December 2024 at 1:00 pm
- [NIHR NICE rolling call](#)
We are interested in receiving applications to meet recommendations in research identified in [National Institute for Health and Care Excellence \(NICE\) guidance](#), that has been published or updated during the last 5 years. For the purposes of this call, NICE guidance includes the following: clinical; social care; public health; technology appraisals; interventional procedures; diagnostics. For more information, please read the [specification document](#). To apply for this funding opportunity you will need to log in through REALMS. Closing date: 2 January 2025
- [Research in Mental Health Nursing \(HSDR Programme\)](#)
The Health and Social Care Delivery Research (HSDR) Programme is accepting Stage 1 applications to this funding opportunity.
Closing date: 8 January 2025 at 1:00 pm

- [Health Technology Assessment \(HTA\) Programme Researcher-led \(evidence synthesis\)](#)
The Health Technology Assessment (HTA) Programme is accepting Stage 1 applications to this funding opportunity. Closing date: 8 January 2025 at 1:00 pm
- [Research Programme for Social Care Competition 3](#)
The Research Programme for Social Care funds research which generates evidence to improve, expand and strengthen the way social care is provided for users of care services, carers, the social care workforce, and the public across the UK - England, Wales, Scotland, and Northern Ireland. The programme funds primary, secondary and evidence synthesis research including qualitative, quantitative and mixed methods designs. All proposals are expected to have a high degree of involvement from relevant people who need or use social care and the social care workforce.
Closing date: 15 January 2025 at 1:00 pm
Information on these and other NHIR funding can be found on the [NIHR Funding website](#).

UKRI grant calls



UK Research and Innovation

UKRI is developing funding along strategic themes with a variety of co-funders including the MRC. Look out for information on its website relating to its themes:

- Building a green future
- Securing better health, ageing and wellbeing
- Tackling infections
- Building a Secure and Resilient World
- Creating opportunities, improving outcomes

Currently open UKRI funding includes:

- [Pre-announcement: UKRI cross research council responsive mode pilot scheme: round 2](#)
Apply for funding for breakthrough or disruptive interdisciplinary ideas that transcend, combine or significantly span disciplines that are not routinely funded through existing UKRI responsive mode schemes. Project leads must be based at an organisation eligible for UKRI Research

Council funding. Award range: £200,000 - £1,200,000
Closing date: 19 November 2024 4.00 pm UK time

- [Developmental pathway funding scheme: stage one](#)
Apply for funding to develop and test novel therapeutics, medical devices, diagnostics and other interventions. You must be employed at a research organisation eligible for MRC funding.
Closing date: 20 November 2024 4:00pm UK time
- [International partnership: Ecology and Evolution of Infectious Diseases](#)
Apply for research funding to understand ecological, evolutionary, and social drivers that influence the transmission dynamics of infectious diseases of animals, humans and plants. You must be based at a UK research organisation eligible for funding from UKRI or Defra. Maximum award £1,000,000.
Closing date: 20 November 2024 4:00pm UK time
- [Data sandpit for metascience](#)
Apply to attend a four-day interactive sandpit to develop novel projects that can address multi-faceted metascience questions related to research and development (R&D) funding and inform R&D policymaking. The sandpit will take place in February 2025. Attendance for the full four days will be mandatory for selected participants.
Closing date: 21 November 2024 4:00pm UK time
- [DARE UK Transformational Programme: core components](#)
Apply for funding to transition minimum viable product capabilities to production-ready reference implementations, ready for testing and adoption in real-world research settings by Trusted Research Environments. You must be based at a UK research organisation eligible for UK Research and Innovation funding.
Closing date: 26 November 2024 4:00pm UK time
- [Applied global health research: stage one](#)
Apply for funding to support applied research that will address global health challenges and inequities. We will accept applications of all sizes, including large research projects and small to medium-scale applications. Award range £150,000 - £2,000,000.
Closing date: 3 December 2024 4:00pm UK time

- **[Applied global health partnership: stage one](#)**
Apply for funding to set up a new research partnership to enable the development and delivery of novel applied research that will address global health challenges and inequities, developing a portfolio of high-quality partnerships, which will be diverse, promote multidisciplinary and strengthen global health research capacity. Award range £150,000 - £1,000,000. Closing date: 3 December 2024 4:00pm UK time
- **[UK future internet NetworkPlus: full application invite only](#)**
Apply for funding for a UK future internet NetworkPlus which brings together the research community and stakeholders. This funding opportunity is part of the UKRI Creating Opportunities, Improving Outcomes strategic theme. You must be based at a UK research organisation eligible for UKRI funding. Maximum award £5,200,000
Closing date: 3 December 2024 4:00pm UK time
- **[Purchase mid-range equipment for biomedical research: MRC Equip](#)**
Apply for funding for mid-range equipment for research across MRC's scientific areas. You must be employed at a research organisation eligible to apply for MRC funding.
Closing date: 17 December 2024 4:00pm UK time
- **[Neurosciences and mental health: new investigator: responsive mode](#)**
Apply for funding to research neurosciences and mental health and take the next step towards becoming an independent researcher. You must have the skills and experience to 'transition to independence' and the support of a host research organisation eligible for MRC funding.
Closing date: 9 January 2025 4:00pm UK time
- **[Population and systems medicine: new investigator: responsive mode](#)**
Apply for funding to research population and systems medicine and take the next step towards becoming an independent researcher. You must have the skills and experience to 'transition to independence' and the support of a host research organisation eligible for MRC funding.
Closing date: 9 January 2025 4:00pm UK time
- **[Infections and immunity: new investigator: responsive mode](#)**
Apply for funding to research infections and immunity and take the next step towards becoming an independent researcher. You must have the skills and experience to 'transition to independence' and the support of a host research organisation eligible for MRC funding.
Closing date: 9 January 2025 4:00pm UK time
- **[Molecular and cellular medicine: new investigator: responsive mode](#)**
Apply for funding to research molecular and cellular medicine and take the next step towards becoming an independent researcher. You must have the skills and experience to 'transition to independence' and the support of a host research organisation eligible for MRC funding.
Closing date: 9 January 2025 4:00pm UK time
- **[Neurosciences and mental health: programme: responsive mode](#)**
Apply for funding to support a programme of research focused on neurosciences and mental health. You must be employed at a research organisation eligible to apply for MRC funding and have a record of securing funding and delivering research.
Closing date: 9 January 2025 4:00pm UK time
- **[Population and systems medicine: programme: responsive mode](#)**
Apply for funding to support a programme of research focused on population and systems medicine. You must be employed at a research organisation eligible to apply for MRC funding and have a record of securing funding and delivering research.
Closing date: 9 January 2025 4:00pm UK time
- **[Infections and immunity: programme: responsive mode](#)**
Apply for funding to support a programme of research focused on infections and immunity. You must be employed at a research organisation eligible to apply for MRC funding and have a record of securing funding and delivering research.
Closing date: 9 January 2025 4:00pm UK time
- **[Molecular and cellular medicine: programme: responsive mode](#)**
Apply for funding to support a programme of research focused on molecular and cellular medicine. You must be employed at a research organisation eligible to apply for MRC funding and have a record of securing funding and delivering research.
Closing date: 9 January 2025 4:00pm UK time

- **[Molecular and cellular medicine: research grant: responsive mode](#)**
Apply for funding to support research projects focused on molecular and cellular medicine. You must be employed at a research organisation eligible to apply for MRC funding. You can involve more than one research group or organisation in the project.
Closing date: 9 January 2025 4:00pm UK time
- **[Infections and immunity: research grant: responsive mode](#)**
Apply for funding to support research projects focused on infections and immunity. You must be employed at a research organisation eligible to apply for MRC funding. You can involve more than one research group or organisation in the project.
Closing date: 9 January 2025 4:00pm UK time
- **[Population and systems medicine: research grant: responsive mode](#)**
Apply for funding to support research projects focused on population and systems medicine. You must be employed at a research organisation eligible to apply for MRC funding. You can involve more than one research group or organisation in the project.
Closing date: 9 January 2025 4:00pm UK time
- **[Neurosciences and mental health research: research grant: responsive mode](#)**
Apply for funding to support research projects focused on neurosciences and mental health. You must be employed at a research organisation eligible to apply for MRC funding. You can involve more than one research group or organisation in the project.
Closing date: 9 January 2025 4:00pm UK time
- **[MRC: partnership: responsive mode](#)**
Apply for funding to support new partnerships between diverse groups of researchers within the remit of MRC. You must be employed by a research organisation eligible to apply for MRC funding.
Closing date: 9 January 2025 4:00pm UK time
- **[Small molecule High Throughput Screen using AstraZeneca facilities](#)**
Apply for funding to run a High Throughput Screen (HTS) using AstraZeneca's compound library and screening robots. Two funding opportunities per year with

changing highlights. This funding opportunity will have a highlight on new targets related to autoimmunity or motor neurone disease. Maximum award £270,000.

Closing date: 16 January 2025 4:00pm UK time

- **[Applied global health partnership: invited stage two](#)**

Apply for funding to support a new research partnership to enable the development and delivery of novel research that will address global health challenges and inequities. You must be invited to apply for stage two of this funding. Award range £150,000 - £1,000,000.

Closing date: 16 January 2025 4:00pm UK time

- **[Applied global health research: invited stage two](#)**

Apply for funding to support applied research that will address global health challenges and inequities. You must be invited to apply for stage two of this funding opportunity. **Award range** £150,000 - £2,000,000.

Closing date: 16 January 2025 4:00pm UK time

- **[MRC Centre of Research Excellence: round three: outline application](#)**

Apply for MRC Centre of Research Excellence (MRC CoRE) funding to tackle complex and interdisciplinary health challenges. You must be based at a UK research organisation eligible for MRC funding. Maximum award £26,250,000.

Closing date: 13 February 2025 4:00pm UK time

For more information please [visit the UKRI website](#).



ARIA funding

Created by an Act of Parliament, and sponsored by the Department for Science, Innovation, and Technology, the Advanced Research and Invention Agency (ARIA) funds projects across the full spectrum of R&D disciplines, approaches, and institutions.

ARIA's programmes and projects are directed by our Programme Directors, scientific and technical leaders with deep expertise and a

focused, creative vision for how technology can enable a better future.

ARIA's current open funding programme is 'Technical Area 4: Testing and Evaluation'.

For further information [visit the ARIA website.](#)

barts CHARITY **Barts Charity Research Seed Grants**

Barts Charity Research Seed Grants provide seed funding up to £75,000 to support the generation of research data and information that:

- Enhances our understanding of health and illness and could lead to improved lives in East London
- Will support a grant application to another funding organisation or pump-prime a new academic-clinical collaboration.

The charity particularly encourages applications from researchers at the start of their independent career or those who want to develop ideas that are outside their discipline or area of expertise.

You can find out more about the Research Seed Grants [on the Barts Charity website:](#)

Next deadline 20 January 2025. Barts Charity welcomes applications for this scheme four times a year.



Apply for Queen Mary public engagement grants

[Queen Mary's Centre for Public Engagement \(CPE\)](#) runs a number of funding streams for Queen Mary staff and students, supporting your application to external public engagement funds and help with how to include public engagement in grant applications.

The grants are designed to support staff undertaking public engagement, community engagement and Patient and Public Involvement (PPI) activity.

The small grant is a monthly funding scheme (excluding December, June-August) that provides grants of up to £1,000 to enable Queen Mary staff and students the opportunity to deliver small-scale projects that engage the public with University research, teaching, or core business. Large Grants is an annual funding scheme that provides grants of up to £10,000 to enable Queen Mary staff and students the opportunity to undertake projects of a larger scope, scale, or legacy to engage the public with University research, teaching, or core business. Find out more information, including how to apply for both schemes, please [visit the CPE website](#)



British Academy – additional needs funding pot

The British Academy is introducing a new initiative to support researchers with additional needs. It is inviting current and new award holders who would like to apply for additional funding to support their awards or applications.

This funding pot is available for both current award holders and applicants who would like to apply for an award but need support with submitting their applications. In all cases, the Academy will need a case to be set out requesting this support, including a brief explanation as to why these needs cannot be met by the applicant's employing or host university or research organisation. Applications must be submitted online using the British Academy's Grant Management System (GMS), Flexi-Grant®. For more information please [visit the British Academy website.](#)

Muscular Dystrophy UK Project Grants and Proof-of-Principle Grants

The 2025 MD Grant Round is now open. Currently offered is funding for PhD studentships and project grants (including two- to three-year project grants and shorter, proof-of-principle projects of up to one year) that have relevance to one or more types of muscular dystrophy or a related neuromuscular condition. Max value: £300,000. The deadline for submission of the online application is 3pm on Wednesday 15 January 2025.

[For more information visit the Muscular Dystrophy UK website](#)

International and EU Research and Innovation Funding Opportunities

A bi-monthly bulletin of various non-EU international funding opportunities is available on the JRMO International Team's [SharePoint site](#). In addition, EU Horizon funding opportunities are also set out on [SharePoint](#)

Together these contain a huge number of research funding schemes from the EU and other international sources many of which are of relevance to clinical researchers.

If you don't already have access to the EU/International Sharepoint site please contact a [member of the international team](#) to obtain it.

Fellowships and related opportunities

UKRI fellowships



UK Research and Innovation

- [Daphne Jackson fellowship](#)
These fellowships are for those looking to return to a research career after a break. Fellowships combine a personalised retraining programme with a challenging research project. They are flexible, usually lasting two years at 0.5 full-time equivalent, although some UKRI funders may award longer.
Open - no closing date
- [Researching ME/CFS: highlight notice](#)
Apply for funding to research myalgic encephalomyelitis/chronic fatigue syndrome, also known as ME/CFS.
Open - no closing date
- [Researching motor neurone disease: highlight notice](#)
Apply for funding to research motor neurone disease (MND). You can get funding through any grants from MRC research boards or panels or MRC fellowships. You should apply through the existing funding opportunity that is most relevant to your science area and career stage.
Open - no closing date
- [Clinician scientist fellowship](#)

Apply for support to become an independent researcher in a medical research field. Your research can focus on any area of Medical Research Council's (MRC) remit to improve human health.
Closing date: 15 January 2025 4:00pm UK time

- [Postdoctoral clinical research training fellowship](#)
Apply for funding to reacquire research skills. Your research can focus on any area of Medical Research Council (MRC)'s remit to improve human health.
Closing date: 15 January 2025 4:00pm UK time
- [Predoctoral clinical research training fellowship](#)
Apply for funding to undertake a PhD. Your research can focus on any area of Medical Research Council (MRC)'s remit to improve human health.
Closing date: 15 January 2025 4:00pm UK time

For more information [visit the UKRI website](#)



NIHR fellowships



- [NIHR Academy Doctoral Fellowship Round 13](#)
The NIHR Doctoral Fellowship is a three year full-time award that supports individuals to undertake a PhD in an area of research within the [NIHR's remit for personal awards](#). The Fellowship may also be taken up on a part-time basis. Clinicians or practitioners are able to include up to 20% clinical or practice time as part of the Fellowship. Read the [application guidance](#) before applying.
Closing date: 16 January 2025 at 1:00 pm
- [Postdoctoral fellowships: Advanced Fellowship Round 13](#)
The NIHR Advanced Fellowship is a Postdoctoral Fellowship aimed at anyone with a PhD who hasn't yet been appointed to a professorial post. The Advanced Fellowship supports individuals undertaking research in any scientific discipline or sector that can demonstrate a contribution to improving health and/or care. Read the [application guidance](#) before applying.
Closing date: 23 January 2025 at 1:00 pm

More information on all NIHR funding can be found on the [NIHR Funding website](#).

AFM-Téléthon Scientific Research Postdoctoral Fellowships

The development of new therapeutic concepts for rare diseases and the understanding of the causes and mechanisms of neuromuscular diseases are the subject of numerous funding from the AFM-Téléthon through its annual calls for proposals. Each year, the Association supports more than 200 research projects and young researchers (doctoral and post-doctoral fellows). Funding requests must be submitted through the online web portal according to the calendar.

Funding for researchers based anywhere in the world to undertake a post-doctoral fellowship in neuromuscular disorders scientific research.

Application deadline: 21 January 2025.

For more information visit [the AFM Telethon website](#).

Japan Society Postdoctoral Fellowships for Overseas Researchers

The British Academy is currently inviting applications from UK-based early career scholars for the Japan Society for the Promotion of Science (JSPS) Postdoctoral Fellowships for Overseas Researchers. The Academy is an overseas nominating authority for this fellowship scheme. This scheme is for scholars in the UK who are at an early stage of their career and wish to conduct research in Japan for a period of 12-24 months.

For applicants to be considered for nomination by the British Academy, the research undertaken must be on a subject within the social sciences or humanities. Applicants must have received their PhD within the last six years prior to their application and must be ordinarily resident in the UK. They must have a research proposal agreed with a host researcher employed at a university/research institution in Japan.

For more information please [visit the British Academy website](#) or contact international@thebritishacademy.ac.uk



Soulsby Fellowships

Soulsby One Health Fellowships are intended to support and develop early career researchers working in a field related to "One Health". Through these fellowships, the Trustees of the Soulsby Foundation for One Health aim to identify potential future leaders in One Health and to encourage their personal growth through the opportunity of a Soulsby Fellowship. Applicants should be seeking to conduct the Project in a field related to "One Health" and be able to describe in detail the potential outcomes and impact. It may be a discrete project or associated with a larger

project, e.g. a PhD or MSc. However, the Project must be clearly defined and stand-alone.

Successful applicants will demonstrate how their Project will build their “One Health” Core Competencies and promote new collaborations and knowledge sharing between disciplines and between cultures. In country travel may be sufficient if the Project demonstrably meets these cross-cultural and transdisciplinary objectives. Nevertheless, projects will normally involve at least two countries e.g. the Primary Affiliated Institution and the Collaborating Centre will normally be in different countries.

Max value: £12,000. Application deadline: 31 January 2025.

For more information [visit the Soulsby Foundation website.](#)

HARP PhD opens applications

Applications for HARP PhD and Pre-Doctoral Training Programme for Health Professionals for October 2025 [are now open.](#)

HARP is a doctoral training programme for health professionals, offering full time salary and consumables for three years. It is a partnership of QMUL and City supported by Social Action for Health and funded by the Wellcome Trust, Barts Charity, the Trustees of the Medical College of St Bartholomew’s Hospital, Barts Health NHS Trust and East London Foundation Trust.

It runs a 3-year clinical PhD Programme dedicated to redressing health inequality through representative research in an inclusive environment. We are looking for enthusiastic fellows who would be interested in projects addressing research topics related to underrepresented populations and diseases due to social inequalities, marginalisation or health status.

Applicants can be of any clinical health profession including medical graduates, dentists, nurses, physiotherapists, clinical psychologists, and many others. Potential applicants can apply to one of two programmes:

- PhD fellowship application deadline: 8 January 2025; and
- Pre-doctoral training programme deadline: 5 February.

Further information, including on how to apply can be found [on the programme’s website](#)



Lasker Awards

The Lasker Awards program was created in 1945 by Albert and Mary Lasker to shine a spotlight on fundamental biological discoveries and clinical advances that improve human health, and to draw attention to the importance of public support of science.

Lasker Awards are given in the categories of Basic Research, Clinical Research, Special Achievement, and Public Service. The Lasker Foundation is now accepting nominations for the 2025 Lasker Awards. Visit their [nomination page](#) for more information.

Awards are available for researchers around the world to recognise fundamental biological discoveries and clinical advances that improve human health and to draw attention to the importance of public support of science.

Max value: \$250,000 US, application deadline 3 February 2025.

For more information visit the [Lasker Foundation website](#)

Research Professional

Research Professional (formerly Research Research) has an easy-to-use sign-up process: <http://www.researchprofessional.com/>

Funding information: [Up-to-the-minute information about all types of research funding can be found on the Research Professional website – to access this click here \(account and password required\).](#)